

- 1
- 2
- 3
- 4
- 5
- 6
- 7
- 8
- 9
- 10
- 11
- 12
- 13
- 14
- 15
- 16
- 17
- 18

TYPES

- Type **A**: without no-slip disk
- Type **B**: with no-slip disk
- Type **C**: with O-ring

Steel
epoxy resin coating
black, RAL 9005, textured finish

No-slip disk
black, NBR
85±5 Shore A

O-ring
black, NBR
≈ 70 Shore A

FEATURES AND APPLICATIONS

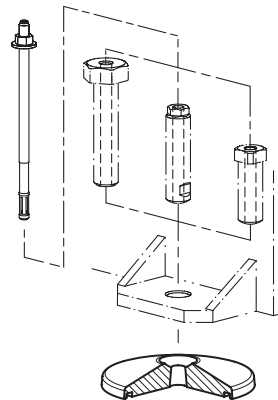
Foot plates GN 37.1 are characterized by their solid construction and large variety. They are used especially on large and heavy systems and machines. The through-hole allows the machine feet to be attached centrally to the ground, making them ideal for compressive and tensile loads.

The foot plates are ideal for use with customized adjustment or compensation stems that have the spherically shaped absorption radius "r" at the contact point. DIN screws or threaded studs with chamfer or pointed nose used as an alternative reduce the load capacity due to the lack of full-surface contact.

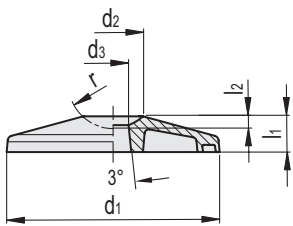
Type B with rubber underlay prevents slipping to the side, protects delicate surfaces and dampens vibrations and tremors. Type C with O-ring provides a seal over the ground to prevent the build-up of dirt under the foot.

ON REQUEST

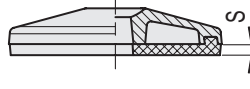
- Zinc plated, blue passivated surface
- Surface available in other colors (epoxy resin coatingg)
- other geometries at the contact point



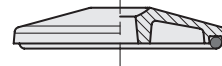
GN 37.1-A



GN 37.1-B



GN 37.1-C



METRIC

GN 37.1-A

Code	Description	d1	d2	d3	l1	l2	r	Static load [kN]	⚖️
GN.33276	GN 37.1-80-R20-A	80	25.5	11	15	4.6	R20	80	267
GN.33281	GN 37.1-100-R20-A	100	25.5	13	17.5	4.6	R20	80	445
GN.33286	GN 37.1-125-R25-A	125	32	16	21	5.8	R25	130	835
GN.33291	GN 37.1-160-R30-A	160	38.5	20.5	27	7	R30	180	1704
GN.33296	GN 37.1-200-R35-A	200	45	25.5	33	7.9	R35	230	3255

GN 37.1-B

Code	Description	d1	d2	d3	l1	l2	r	s	Static load [kN]	⚖️
GN.33277	GN 37.1-80-R20-B	80	25.5	11	15	4.6	R20	3	20	287
GN.33282	GN 37.1-100-R20-B	100	25.5	13	17.5	4.6	R20	4	30	489
GN.33287	GN 37.1-125-R25-B	125	32	16	21	5.8	R25	5	50	917
GN.33292	GN 37.1-160-R30-B	160	38.5	20.5	27	7	R30	6	70	1868
GN.33297	GN 37.1-200-R35-B	200	45	25.5	33	7.9	R35	8	110	3581

GN 37.1-C

Code	Description	d1	d2	d3	l1	l2	r	Static load [kN]	⚖️
GN.33278	GN 37.1-80-R20-C	80	25.5	11	15	4.6	R20	80	270
GN.33283	GN 37.1-100-R20-C	100	25.5	13	17.5	4.6	R20	80	452
GN.33288	GN 37.1-125-R25-C	125	32	16	21	5.8	R25	130	845
GN.33293	GN 37.1-160-R30-C	160	38.5	20.5	27	7	R30	180	1725
GN.33298	GN 37.1-200-R35-C	200	45	25.5	33	7.9	R35	230	3282

Conversion Table	
1 mm = 0.039 inch	
mm	inch
80	3.12
100	3.90
125	4.88
160	6.24
200	7.80

Levelling feet and supports